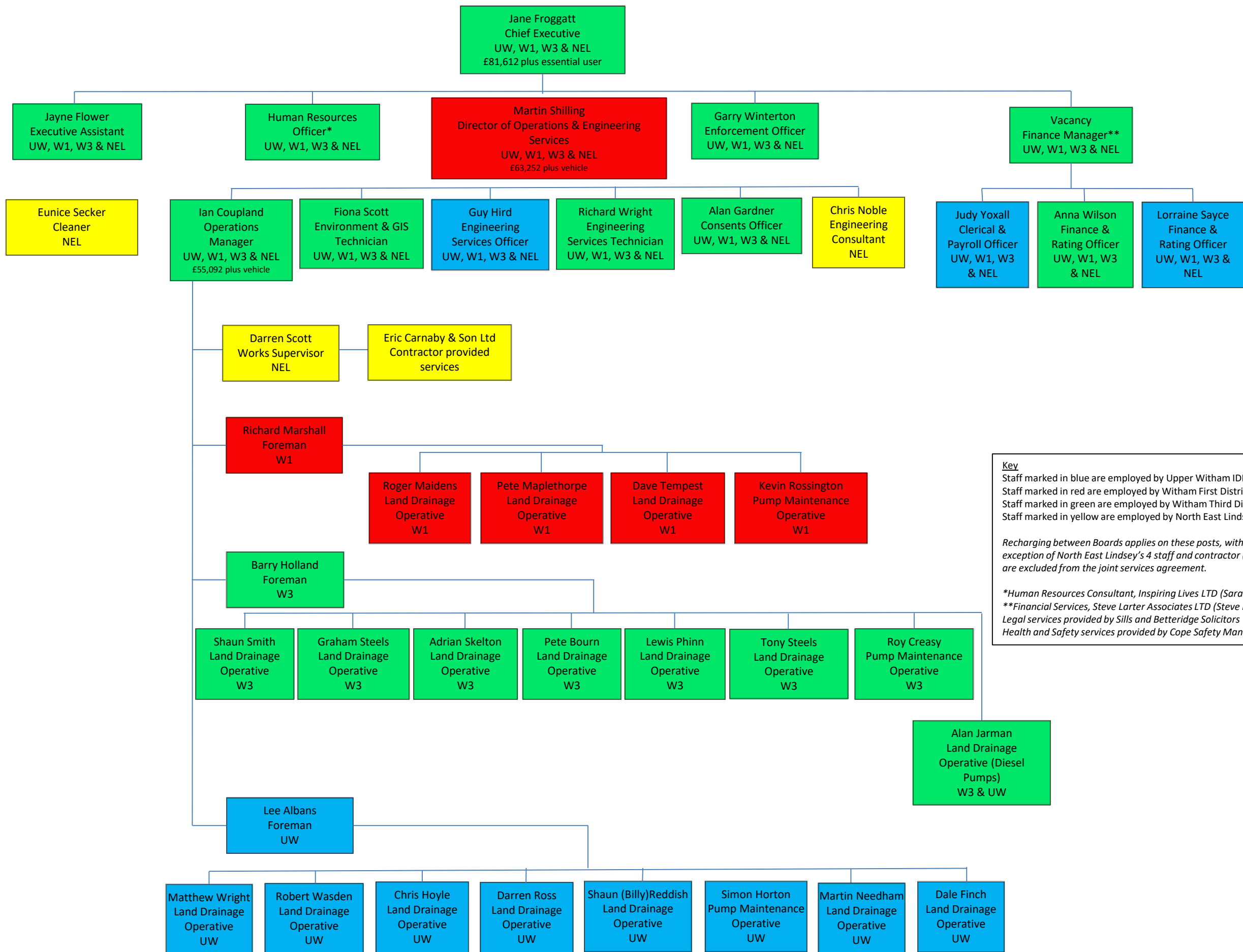


Witham and Humber Drainage Boards' Organisational Structure Chart 25.09.17



Key
 Staff marked in blue are employed by Upper Witham IDB
 Staff marked in red are employed by Witham First District IDB
 Staff marked in green are employed by Witham Third District IDB
 Staff marked in yellow are employed by North East Lindsey IDB

Recharging between Boards applies on these posts, with the exception of North East Lindsey's 4 staff and contractor (yellow) who are excluded from the joint services agreement.

**Human Resources Consultant, Inspiring Lives LTD (Sarah Walden)
 **Financial Services, Steve Larter Associates LTD (Steve Larter)
 Legal services provided by Sills and Betteridge Solicitors
 Health and Safety services provided by Cope Safety Management LTD*